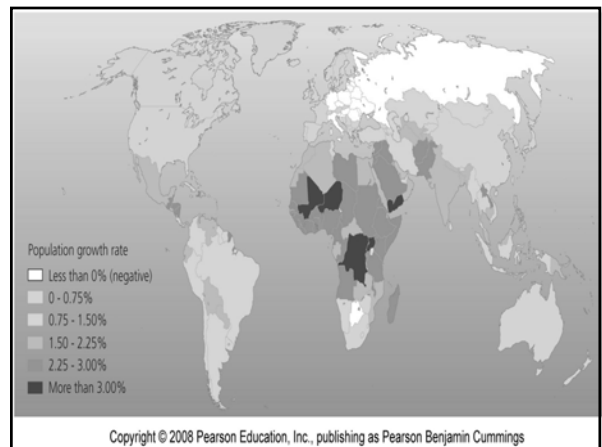
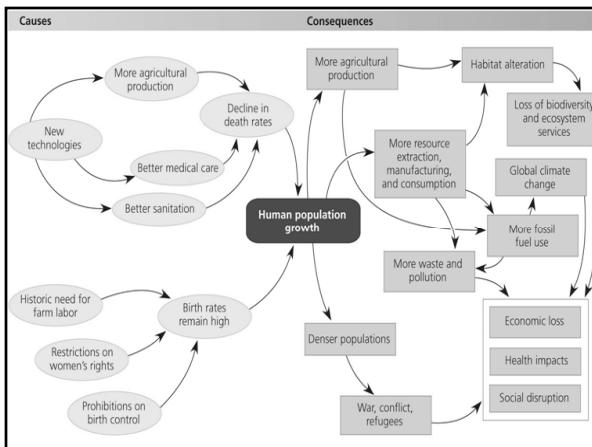
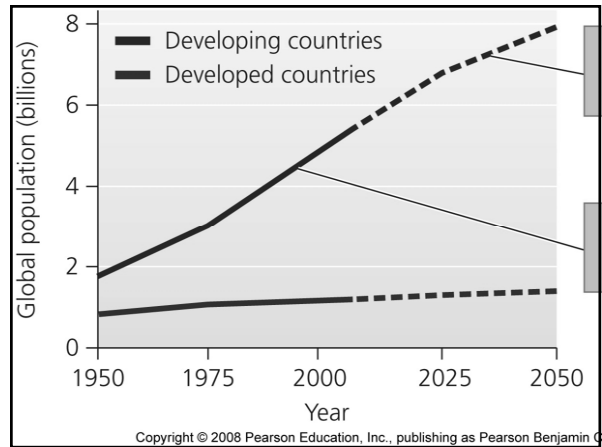
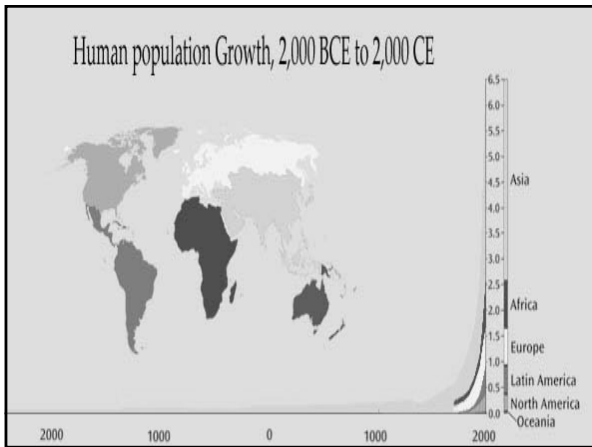
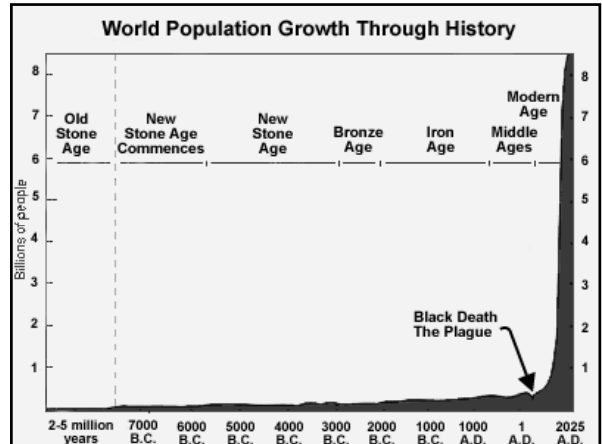


# Population Dynamics



### Explain Our Population Growth

- What are some limiting factors?
- What factors are helping our population grow?

### Implications

- What are the implications of our exponential growth?
- Will our growth continue exponentially?
  - What factors will change?
  - What can limit human population?

### Age Structure

- The age structure of a population is usually shown graphically
- The population is usually divided up into prereproductives, reproductives and postreproductives
- The age structure of a population dictates whether it will grow, shrink, or stay the same size

### Age Structure Diagrams

Positive Growth Pyramid Shape	Zero Growth (ZPG) Vertical Edges	Negative Growth Inverted Pyramid
----------------------------------	--	-------------------------------------

